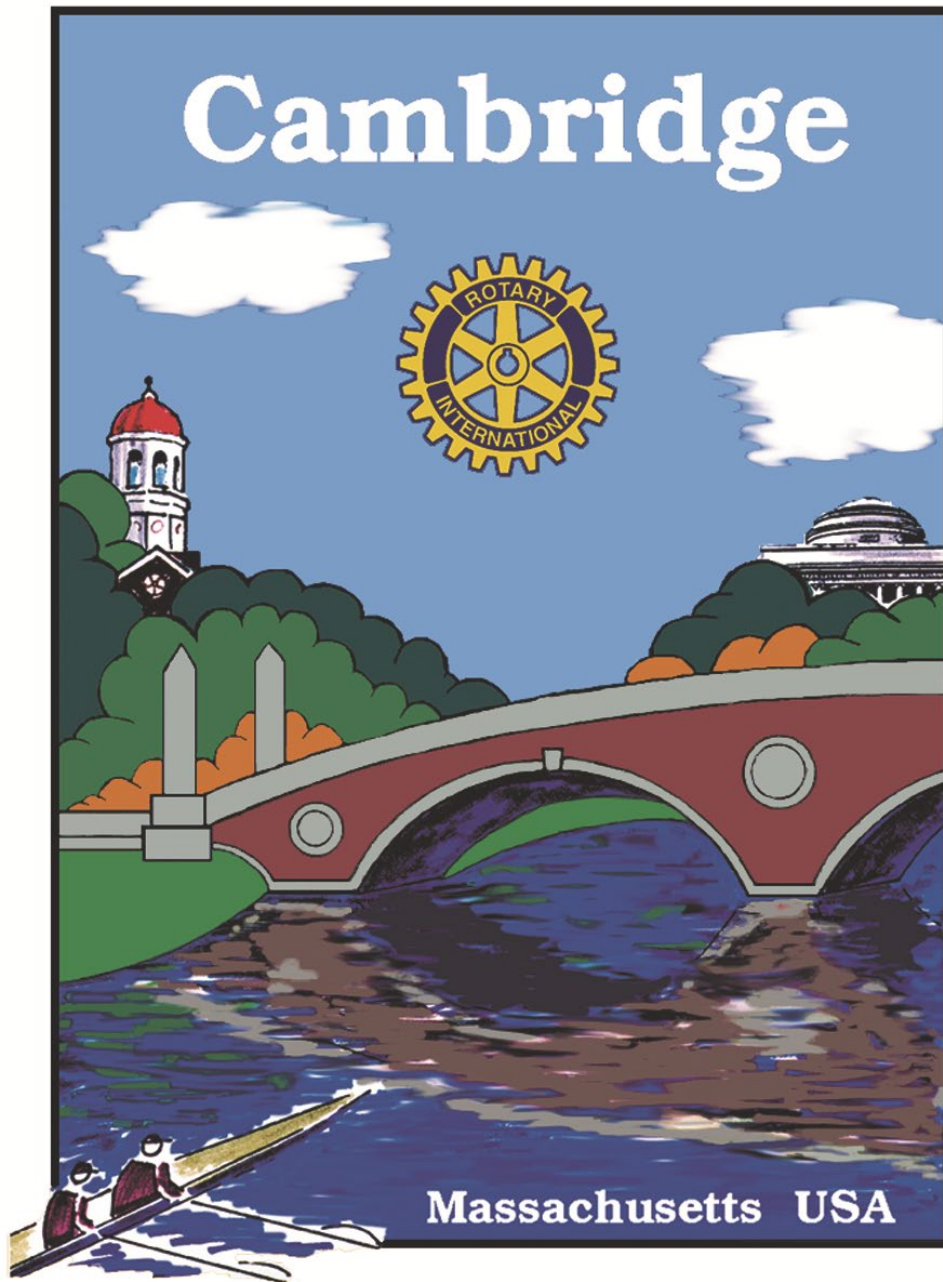


Rotary Club of Cambridge



New Member Information and Application

Rotary

Club of Cambridge

Application for Membership

The Rotary Club of Cambridge was founded in 1922 and, like all Rotary Clubs throughout the world, encourages and fosters the ideal of “service above self.” Its goal is to help build a better community and world, emphasizing service activities to enhance quality of life and human dignity, encourage high ethical standards and create peace in the world.

We are pleased to invite you to join our fellowship and help with our local community and international service projects. The world of Rotary will now be open to you. There are privileges as well as responsibilities in belonging to any Rotary Club. The expectations of club members are detailed later in this document. A tradition in our Club is “Yes” – a member’s answer when asked to help with a project, serve on a committee and/or consider a worthy cause. Please complete the Rotary Club Membership Data Sheet and return the completed form either by email to Club Membership Chair, Yolanda Li at cambridgerotaryclub@gmail.com or hand it to the presiding officer at a regular club meeting. You are always welcome to attend our meetings prior to your formal acceptance and induction into the Club.

We look forward to welcoming you into membership in Cambridge Rotary!

ROTARY CLUB OF CAMBRIDGE MEMBERSHIP APPLICATION

Full Name: _____ Gender: Male Female

Nickname: _____ Show on Badge: Yes No

Home Address:

Business Name & Address:

Home Phone: _____

Business Phone: _____

Cell Phone: _____

Type of Business: _____

Send postal mail to: Home Business

Your Job Title: _____

Preferred Email: _____

Alternate Email: _____

Personal Information:

Your date of birth:
(mm/dd/yyyy) _____

Name of spouse/partner: _____

Anniversary: _____

Degrees held: _____

Languages spoken: _____

Special skills, areas of interest: _____

Prior Rotary Club Membership (name of Club, dates, offices held, RI#): _____

Why do you want to join Rotary? _____

What community service are you currently or recently involved in? _____

Please indicate area of interest for club participation: Community Service Club leadership

Membership Public Image Working with Rotary Youth Clubs

Social Media Rotary Foundation Fundraising

EXPECTATIONS OF CAMBRIDGE ROTARY CLUB MEMBERS

Attendance

Rotary places a very high value on attendance. Attendance builds friendships and is our main communication method for furthering our projects. Perfect attendance is the goal, but 60%+ attendance is expected of all members. If you are unable to attend a Rotary meeting, whether in person or by Zoom, you are expected to make up the missed meeting at another Rotary Club. There are over 40 Rotary Clubs in the greater Boston area with breakfast, lunch and dinner meetings Monday through Friday. You may also participate in a service project.

Participation

Each new Rotarian serves as a Sergeant-at-Arms several times during the year. The Sergeant-at-Arms sets up the meeting room, collects the lunch fee, settles with the restaurant and puts all the meeting supplies away after the meeting.

All Rotarians are asked (a few times per year) to serve as both the Club Greeter on a particular date and the Invocation speaker on another. The Invocation is the blessing / prayer / short inspirational message which opens our meeting.

Service on one of our club committees: Each member picks the type of service relevant to his/her personal interests. Some committees function during only a limited time for a specific project, so many Rotarians serve on multiple committees during the year.

We expect you to attend at our major fundraiser, Chalk on the Walk, typically the first Sunday in May. It takes all club members to set up the event, manage it during the day and dismantle it at day's end.

Suggest a speaker for our meetings. The Program Chair coordinates dates, but the Chair looks to each member for suggestions for interesting programs.

Each new member, after a few months, is expected to speak to the Club for about 5-10 minutes about themselves so members can get to know you, your background, family, occupation, interests, why you joined Rotary and what service you are interested in doing.

Financial Commitment

Payment of the Member Admission Fee of \$50 and payment of semi-annual dues; \$150 in July and \$150 in January on time. New members will receive an initial dues bill appropriately prorated.

Lunch expense and parking voucher, if needed.

On the occasion of your birthday, it is a Cambridge Rotary tradition to donate an amount equal to your age to the Cambridge Rotary Educational Fund, our 501(c)(3) non-profit charitable arm.

Each Rotarian is responsible for finding a sponsor for a square at our annual fundraiser, **Chalk on the Walk**.

Rotarians are expected to donate at least \$100 to the Rotary International Foundation once a year. The Foundation is the funding source for innumerable worthy international service projects

We tend to pass the hat for disaster relief or special emergencies or to support the Education Fund. We also look to members to support our happy dollars.

We assess the membership at holiday time to buy presents for the children from the Y day care center for whom we throw a Christmas Party in December (requested donation \$35). And we also do a collection before Christmas for a holiday tip for the wait staff at our meeting location.